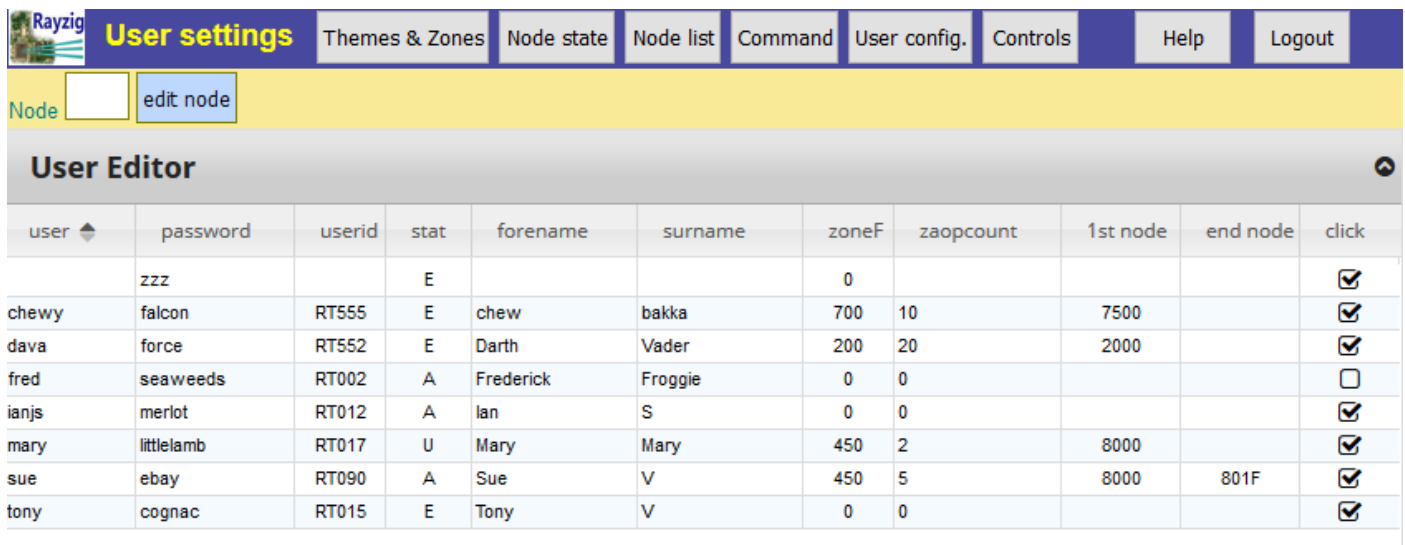


Information Sheet – Multi-Occupancy Function

Multi-occupancy buildings are common in many different walks of life, whether it be the halls of residence at a university or college, or Serviced Offices, there is often a need to restrict a user to a limited number of options. If the building(s) are considered as a number of separate cells (which can be defined by the setup engineer), the modules in these cells can be assigned to a particular user, and a level of control given to them. Within the Rayzig network, we refer to the cells as Rayzig segments.

The first stage is to consider how to define the modules within the Rayzig Segment. This is done by an '(E)ngineer' status user, who can setup user names, which Modules can be used by the User, and how many Modules can be controlled. The number of Zones and Themes a user can setup on themselves is also definable.

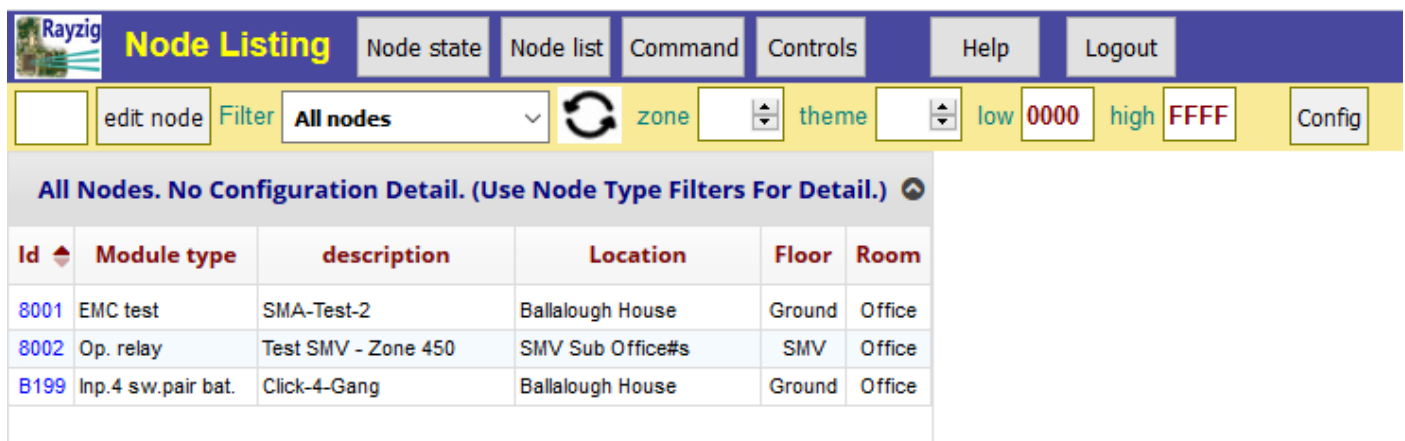


The screenshot shows the 'User settings' page with a navigation bar containing 'Themes & Zones', 'Node state', 'Node list', 'Command', 'User config.', 'Controls', 'Help', and 'Logout'. Below the navigation bar is a 'Node' input field and an 'edit node' button. The main content area is titled 'User Editor' and contains a table with the following data:

user	password	userid	stat	forename	surname	zoneF	zaopcount	1st node	end node	click
	zzz		E			0				<input checked="" type="checkbox"/>
chewy	falcon	RT555	E	chew	bakka	700	10	7500		<input checked="" type="checkbox"/>
dava	force	RT552	E	Darth	Vader	200	20	2000		<input checked="" type="checkbox"/>
fred	seaweeds	RT002	A	Frederick	Froggie	0	0			<input type="checkbox"/>
ianjs	merlot	RT012	A	lan	S	0	0			<input checked="" type="checkbox"/>
mary	littlelamb	RT017	U	Mary	Mary	450	2	8000		<input checked="" type="checkbox"/>
sue	ebay	RT090	A	Sue	V	450	5	8000	801F	<input checked="" type="checkbox"/>
tony	cognac	RT015	E	Tony	V	0	0			<input checked="" type="checkbox"/>

The details are set up such that the Restricted user is assigned a primary zone (Zone F) and also a block of output modules. Once these are defined, access can be given to the user, and they can control these. So, User Sue, is able to control up to 32 modules with Module Addresses of 8000 to 801F, that are assigned to Zone 450. Sue is able to define 5 Themes and 4 Zones.

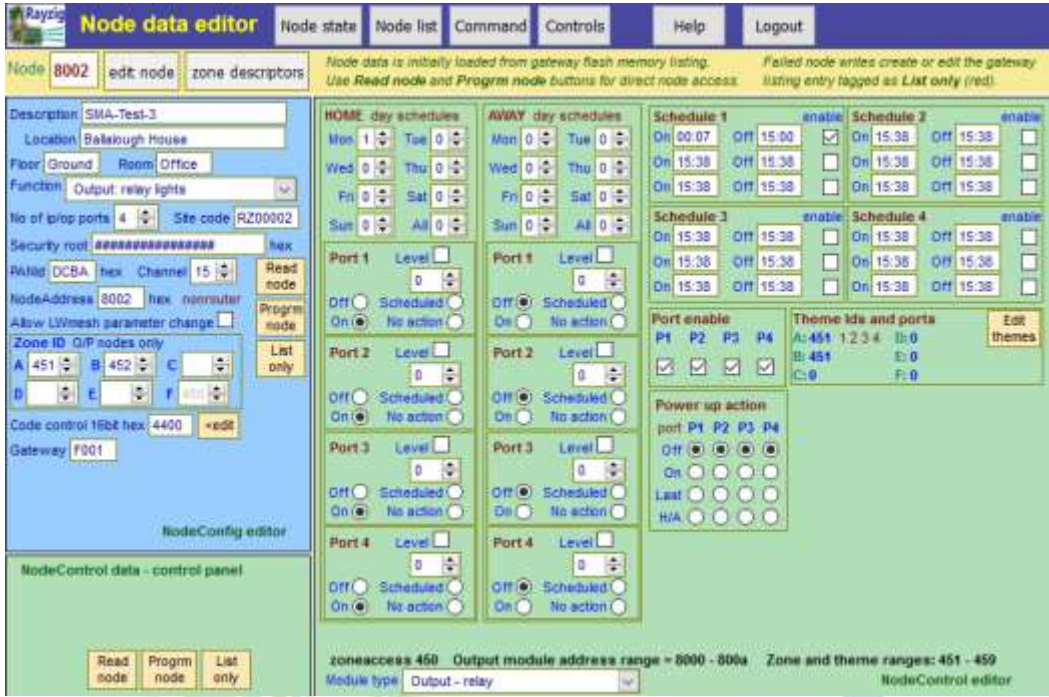
When Sue signs on, only the modules assigned to Zone 450 will show :



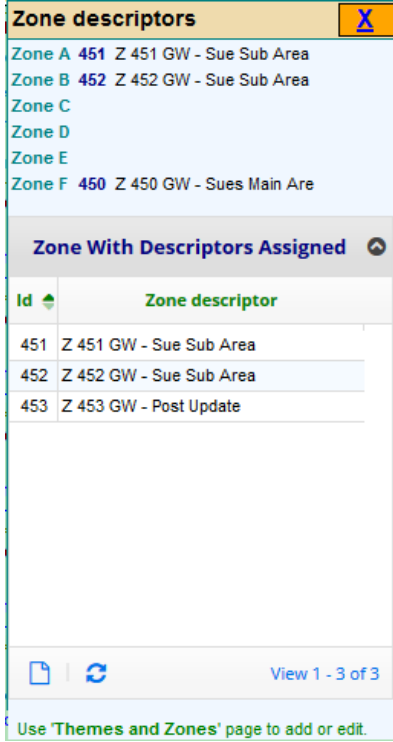
The screenshot shows the 'Node Listing' page with a navigation bar containing 'Node state', 'Node list', 'Command', 'Controls', 'Help', and 'Logout'. Below the navigation bar is an 'edit node' button, a 'Filter' dropdown set to 'All nodes', a refresh button, and input fields for 'zone', 'theme', 'low' (0000), and 'high' (FFFF). A 'Config' button is also present. The main content area is titled 'All Nodes. No Configuration Detail. (Use Node Type Filters For Detail.)' and contains a table with the following data:

Id	Module type	description	Location	Floor	Room
8001	EMC test	SMA-Test-2	Ballalough House	Ground	Office
8002	Op. relay	Test SMV - Zone 450	SMV Sub Office#s	SMV	Office
B199	Inp.4 sw.pair bat.	Click-4-Gang	Ballalough House	Ground	Office

User Sue, as an Administrator, can partially configure these modules – a 4 pair Input Module, and two 4 port Relay modules – which may be controlling separate lights, or other attached electrical outlets – such as sockets. Each 4 port relay module is limited to a 10A aggregate power load.



Sue can use additional Zone ID's to group together any modules to be used with the Zone Control Commands, or set up schedules for each of the parts – using both the Home and Away features – to allow different settings when leaving the area which can be controlled, or when returning to it. If DALI or 0-10v modules are available, level control on Themes may be set as well.



Details of zone descriptors show what is available to the Administrator.

System wide descriptors cannot be changed by the 'restricted user', but localised descriptions can be – eg Module Description, Location, Floor, Room, Zones (within the designated range – but not the Zone or Theme Descriptors), DALI lighting descriptors.



The (A)ministrative User can also add and change themes. This gives a way of setting up Module functions to be controlled by a single switch.



Once the Engineer has set up the overall system, and the Administrator has made localised changes, then the (U)ser can be given access to Rayweb which will provide commands to control modules that are accessible to them :

When a module is selected, the user can then access controls for the particular module

The Web based Rayweb can be used alongside physical switches and controls that have also been set up. In the event of a Raymon and Rayzig users trying to use details of the same modules, a record locking mechanism exists to ensure integrity of data and a message will be shown saying the record is locked by another user.

For more information please contact:

**Rayzig Limited
Ballalough House
Smeale Road
Andreas
Isle of Man
IM7 4JA**

Email : Sales@Rayzig.com

